

GFS-Genossenschaft zur Förderung der Schweinehaltung eG

7 Sites of GFS



Station Ascheberg



Station Saerbeck



Station Rees



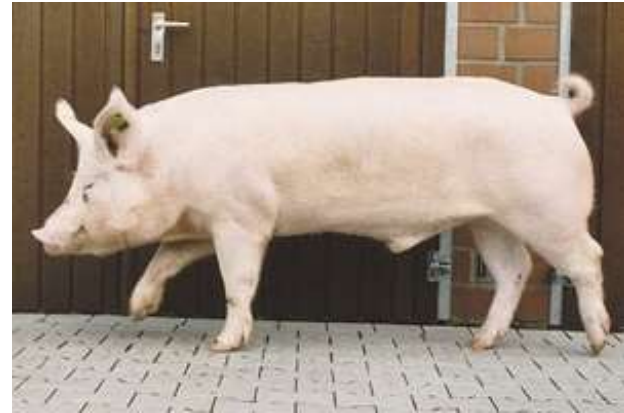
GFS-Station Ascheberg Administration building



internal sales department Ascheberg



Semen from different breeds



Our partners who are possible in Greece



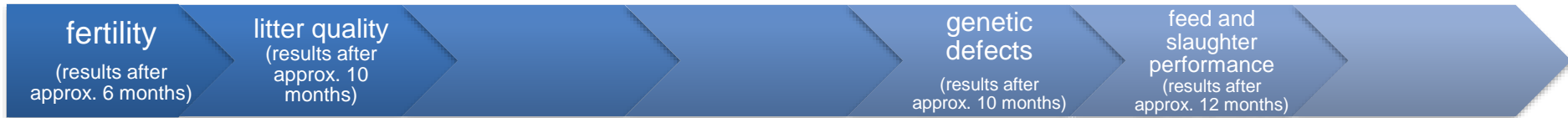
★ at the preliminary stage of these breeds you need a genetic agreement

GFS boar-selection

untested boar



tested boar



Safety of breeding value ra. 30 - 40%

Safety of breeding value ra. 80 – 90%

GFS progeny check

Moved piglets are marked after birth



With eighteen days the piglets are marked with chips.



per week 700-800 piglets get an individual chip.



GFS progeny check



So an individual
identification is possible

Regularly the GFS get information from farmers
Also sow has an individual chip



GFS progeny check



GFS progenys are slaughtered at four slaughter-houses in Westfalen



16 ultrasonic measuring heads deliver the battle data.

The allocation to the test animals occurs about a reading aerial in the AutoFOM tub.



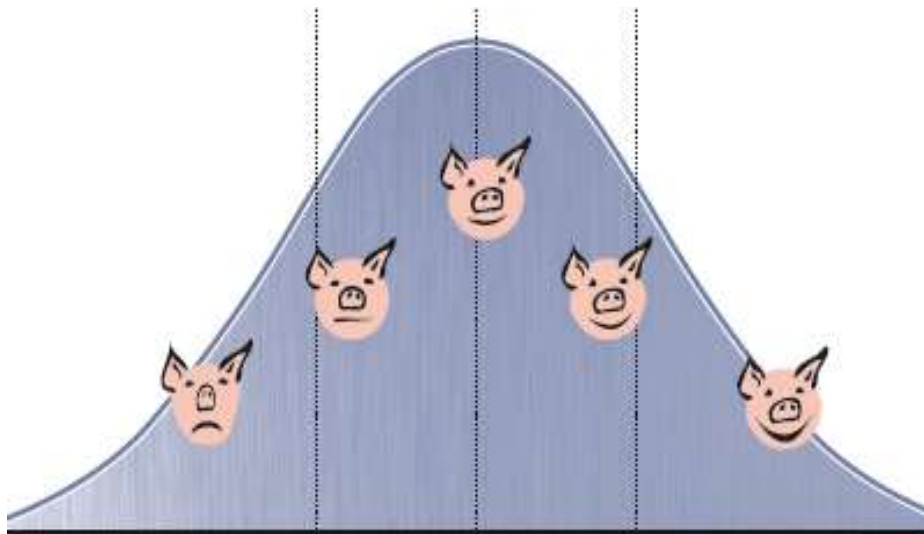
Selection for feed and slaughter performance

GFS – progeny - testing

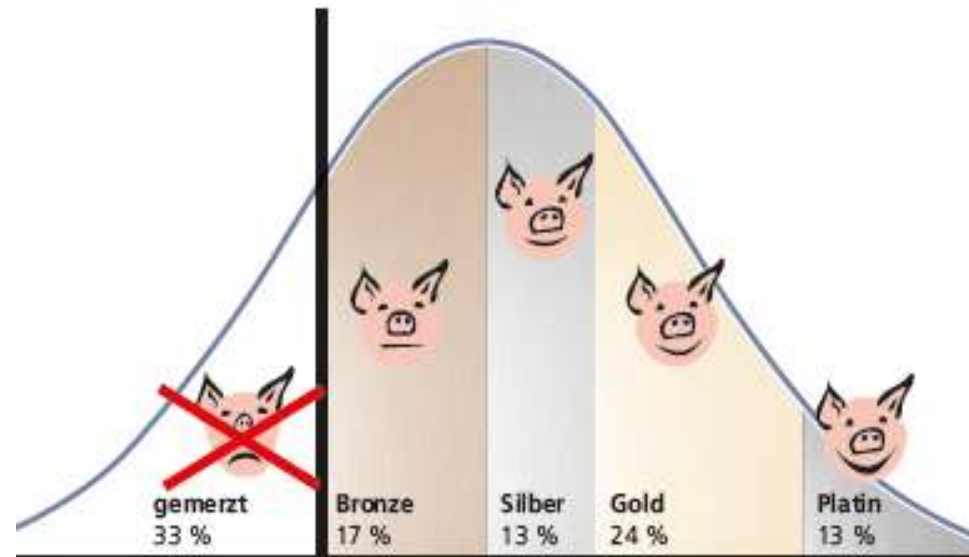
- Every boar is reproduced on at least 15 sows on two different farms
- Computer assisted documentation of performance data on farm
- All pigs are identified by special transponders.
- The transponder-code is scanned at AUTO-FOM-Station of slaughterhouse
- Documentation of feed and slaughter-data are used for generation of BLUP (Best Linear Unbiased Prediction)
- Breeding values are basic for the performance-ranking:
 - Platin (the best) 13 %
 - Gold 24 %
 - Silber 13 %
 - Bronze 17 %
 - Culling worst 33 %

Culling of bad-preformance-boars improves boar quality

other insemination centres
negative boars are not selected



GFS quality
negative boars are selected



Extract from our laboratory



- the tubes are sent to the laboratory by airmail
- they are scanned, weighed and examined with the CASA system and e-Flow technology



- Determination of concentration, motility and morphology
- documented in a small video

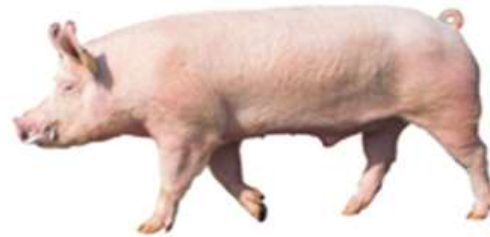
- The label contains the following information:
 - Name of the station
 - EU registration number
 - Name and HB number of the boar
 - Performance class and breeding value of the boar
 - Date of production and best before date
 - Barcode



Health status of the boar stations

- All GFS-AI centers are EU-accepted and allowed to send semen in other EU countries.
- All production sites are certificated as unsuspectious for PRRS by the animal healthservice (Schweinegesundheitsdienst)





Thank you very much for your attention!

